

SEW

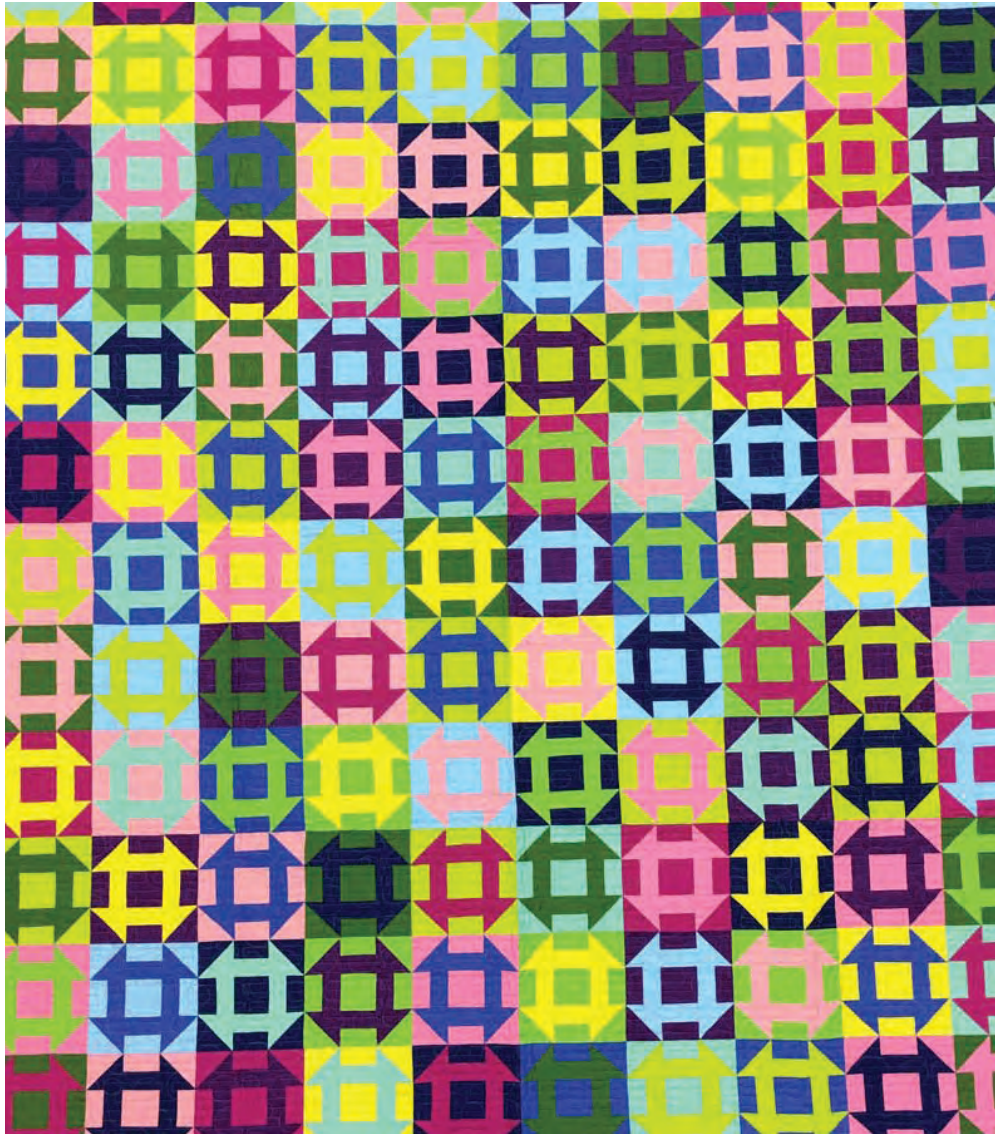
NAME: Bella Solids Churn Dash

FROM THE STUDIO OF: Miss Rosie

SIZE: 60" x 72"

PAGE: 1 of 1

RECIPE
moda



Bella Solids Churn Dash~ made with the colors of Moda's Spring Market 2017 Booth.

- Made with the following Bella Solids - 9900 19 Royal - 9900 27 30s Pink - 9900 65 Apron Strings Green - 9900 116 Dusk - 120 Betty's Pink - 9900 141 Bluebell - 9900 214 Berrylicious - 9900 221 Sunflower - 9900 224 Violet - 9900 266 Acid Green - 9900 267 Sprout - 9900 302 Iris

This Bella Churn Dash was made with 2 pads - Cake Mix Recipe 6.

Fabric Requirements:

- $\frac{7}{8}$ yards each of 12 different Bella Solids
- $\frac{5}{8}$ yard for binding - or $\frac{3}{8}$ yard of 2 different colors
- 4 $\frac{1}{2}$ yards for backing

8 7 6 5 4 3 2 1

Cutting:

From each of the 12 pieces of fabric ~ Cut the following:

- Cut 3 strips - 10" x 42" wof. From the strips, cut a total of 10 squares - 10" x 10".
There will be extra squares - make the quilt bigger or use them on the back.

Assembly: After making the half-triangle squares - HTSs - all seams are a scant $\frac{1}{4}$ ".

Layer 2 different color squares - 10" x 10" - with right sides together. Make 60 pairs. Pin one Recipe 6 paper on top of the lighter fabric and stitch on the dotted lines - stitch 60 recipe cards.

Cut the grids apart on the solid lines. Press the seams to the darker fabric with paper still on. Remove paper. Trim the points on the HTSs.

Bella Solids Churn Dash was made using Block 1 on the cover. Each recipe card will yield two blocks - one positive and one negative. (One will be lighter on the outside and one will be darker.)

Make 120 blocks. The blocks will measure $6\frac{1}{2}$ " x $6\frac{1}{2}$ ".

Lay out the blocks in twelve rows of ten blocks each.

Join the blocks to make rows. Press the seams in one direction - pressing the seams of alternating rows in the opposite direction. Or press the seams open.

Join the rows to complete the quilt top. Press the seams in one direction - or press them open.

One last thing... stay-stitching the outer edge of the quilt top approximately $\frac{1}{8}$ " from the edge is recommended to keep the seams from separating while the quilt top is being quilted.

Quilt and bind as desired.