

SEW

NAME: Modern Backgrounds Colorbox Chain

FROM THE STUDIO OF: Miss Rosie

SIZE: 62" x 73"

PAGE: 1 of 4

RECIPE
moda



Made with 1 pad of Cake Mix Recipe 4.

Fabric Requirements:

1 Layer Cake - Zen Chic's Modern Background Colorbox

3 $\frac{3}{8}$ yards Moda Chambray - Royal - 12051 14

$\frac{5}{8}$ yard Bella Solid for Binding - Ochre - 9900 79

5 yards for Backing

8

7

6

5

4

3

2

1

Cutting:

From the Chambray or Background, cut the following:

- Blocks. Cut 9 strips - 10" x 42" wof. From the strip, cut a total of 34 squares - 10" x 10".
- Borders. Cut 8 strips - 3½" x 42" wof.

Assembly: After stitching the Cake Mix Recipe grid - all seams are a scant ¼".

Layer 1 Modern Background Colorbox square - 10" x 10" - on top of one Chambray square with right sides together.
Make 34 pairs.

Pin one Recipe 4 Recipe cardw on top of the squares - with the lighter Modern Background Colorbox square on top. Use enough pins so that the paper won't shift during stitching - you'll be turning it back and forth a few times.

Stitch on the dotted lines - stitch 34 Recipe cards. Remove the pins. Cut the grids apart on the *inner* solid line - **the 3¾" cutting line.**

With the paper still on, press the seams to the darker fabric. Remove the paper. Trim the ears-points on the HTSs.

Lay out the HTSs as shown on the next page - there will be two HTSs left over.

- For the purpose of the design, I chose to piece this with vertical rows. That is not required.

Borders. Join two 3½" x 42" wof strips to make a strip measuring 3½" x approx. 82". (I used a diagonal seam.)

Cut the following lengths:

Sides: Cut 2 strips - 3½" x 68"

Top & Bottom: Cut 2 strips - 3½" x 62¾"

Join the border strips to the sides of the quilt - press the seams toward the border.

Now join the top and bottom borders to the top and bottom edges of the quilt top - press the seams toward the borders.

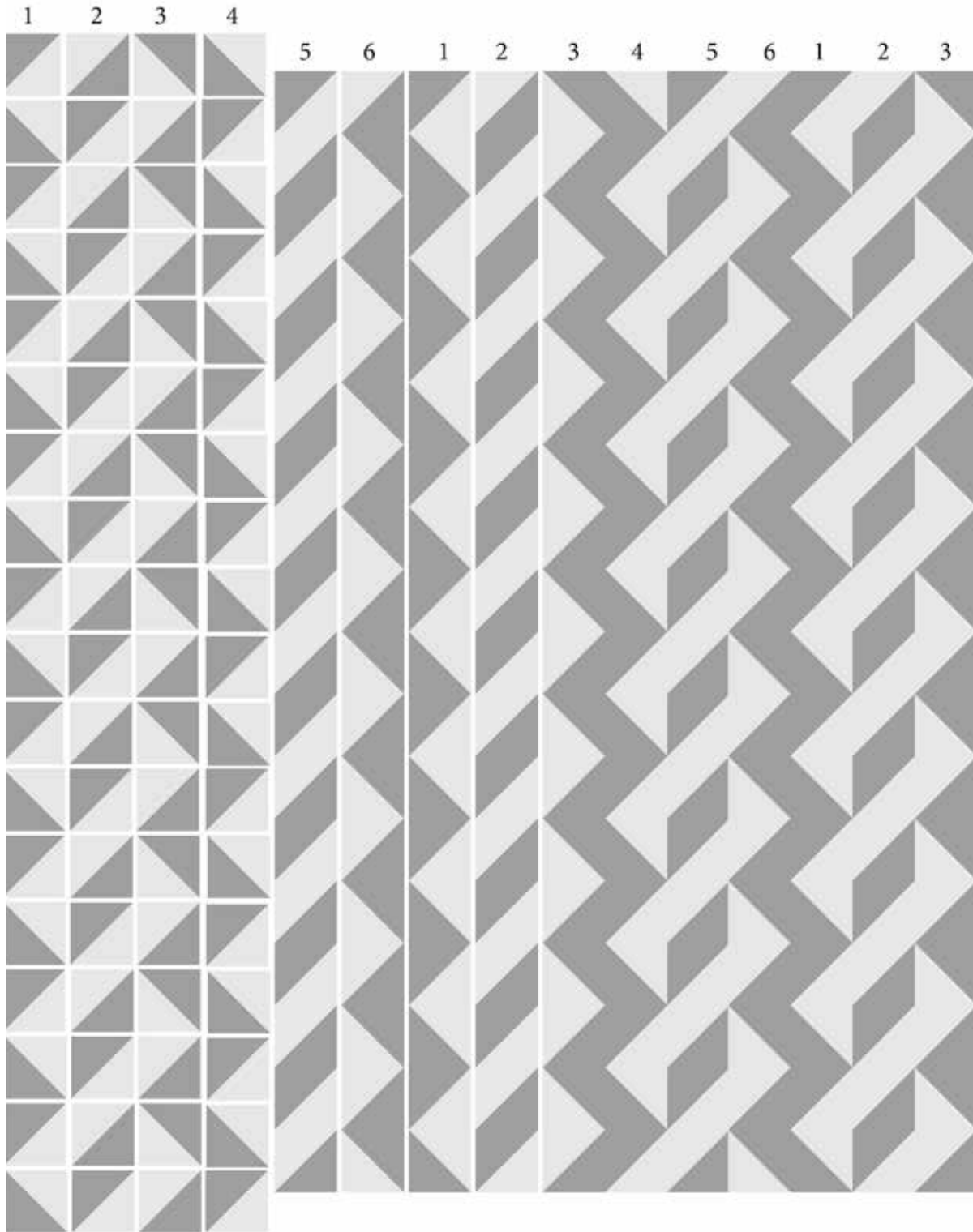
Quilt and bind as desired.

Lay out the HTSs as shown.

Note that there are **six different** vertical rows.

- I chose to off-set the chains, hence the number of different rows.

All seams are a scant 1/4".



Alternate Layout

Note that there are only three different vertical rows for this layout - the rows are not off-set.

All seams are a scant 1/4".

